

# E-STAKS® E-URBAN® AT A GLANCE

Derived from our e-Urban® signature design, this ultra-efficient multifamily solution combines the high density of our e-Urban® with the ease and agility of our new e-Staks® concept. The facade and floor plates are tailor-made to fit locations and demographics with one central corridor serving all four floors.

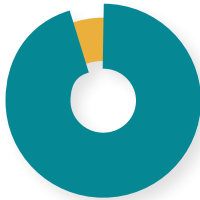
4

**STORY**

**Density:** up to  
41 du/acre

**Parking Space  
per Bedroom:** 1

**Unit Avg. Sq Ft:** 870



**90%**

**EFFICIENT**

RENTABLE V. SELLABLE  
SQUARE FEET



**SURFACE AND OR TUCK  
UNDER GARAGES**



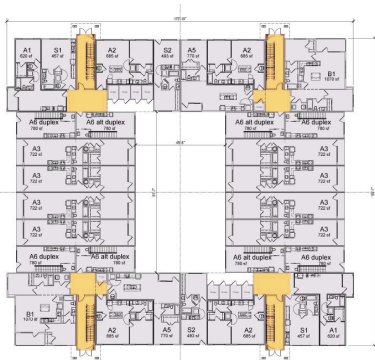
**GROUND-FLOOR  
RETAIL OPTION**



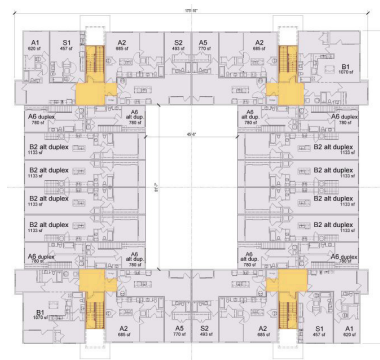
**SUBURBAN  
INFILL**



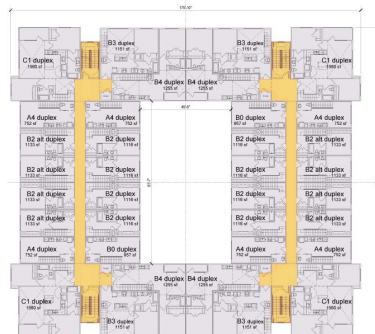
**MODULAR  
ADAPTABLE**



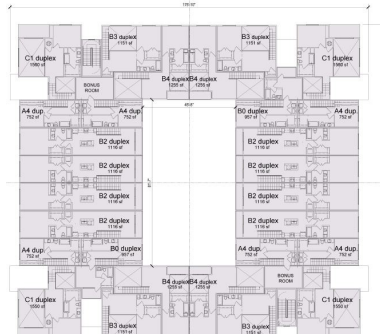
**GROUND  
FLOOR**



**SECOND  
FLOOR**



**THIRD  
FLOOR**



**FOURTH  
FLOOR**



